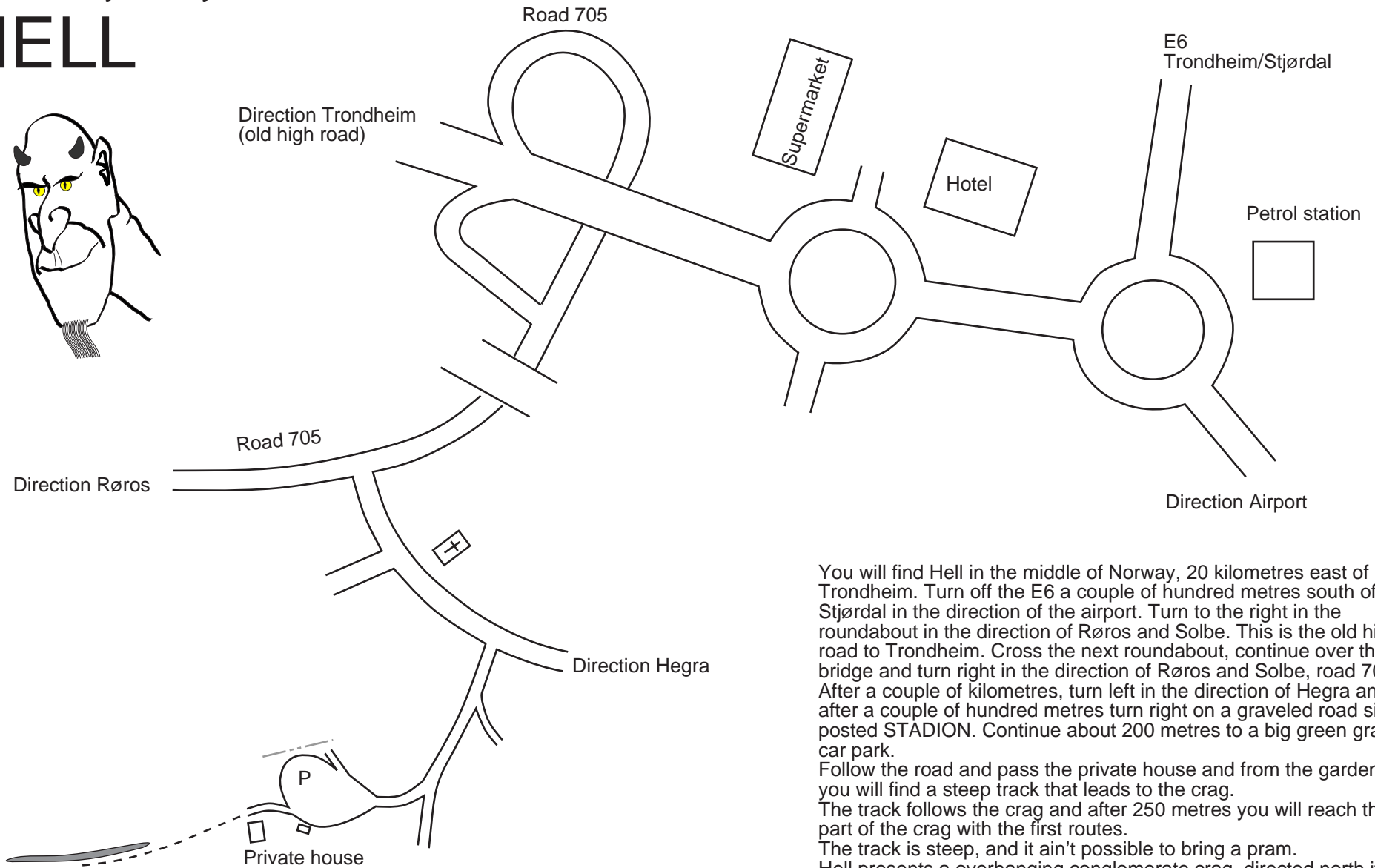


How to find your way to

HELL



You will find Hell in the middle of Norway, 20 kilometres east of Trondheim. Turn off the E6 a couple of hundred metres south of Stjørdal in the direction of the airport. Turn to the right in the roundabout in the direction of Røros and Solbe. This is the old high road to Trondheim. Cross the next roundabout, continue over the bridge and turn right in the direction of Røros and Solbe, road 705. After a couple of kilometres, turn left in the direction of Hegra and after a couple of hundred metres turn right on a graveled road sign posted STADION. Continue about 200 metres to a big green grass car park.

Follow the road and pass the private house and from the garden you will find a steep track that leads to the crag.

The track follows the crag and after 250 metres you will reach the part of the crag with the first routes.

The track is steep, and it ain't possible to bring a pram.

Hell presents a overhanging conglomerate crag, directed north it is always shadow and not a place to go to for anything else than hard climbing. Go to Hell and get tired.

Hell, Keymap North

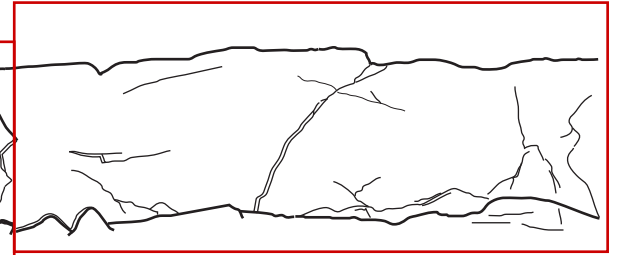
1



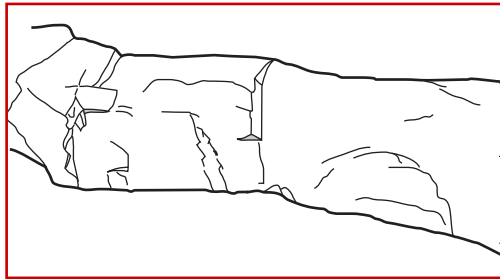
2



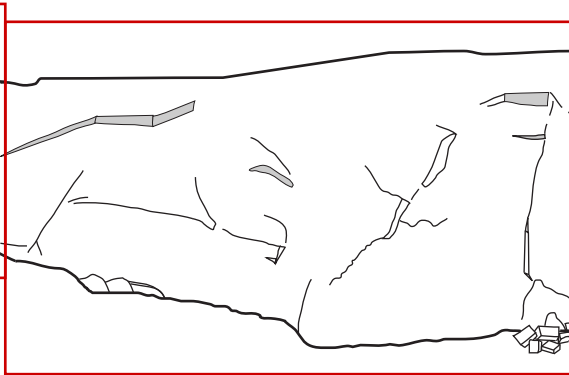
3



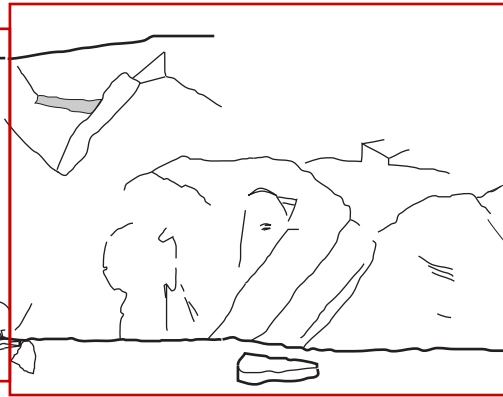
4



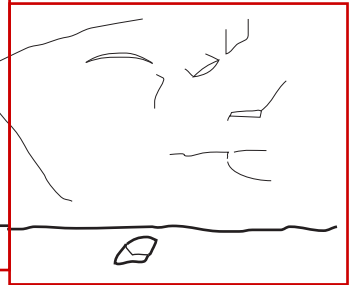
5



6



7

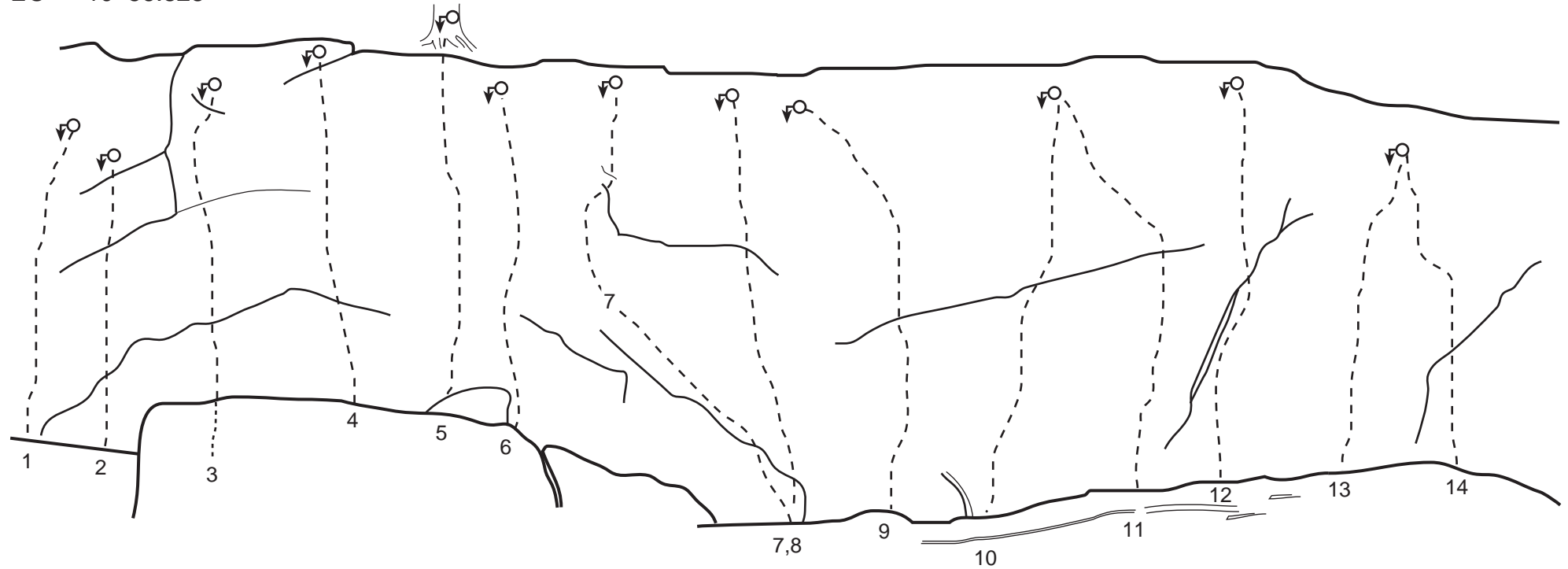


The crag continues in the
direction of the car park.
250 metres to the car park.

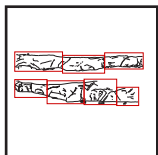


Hell, far left, 1

N 63° 26.486`
 EO 10° 56.828`

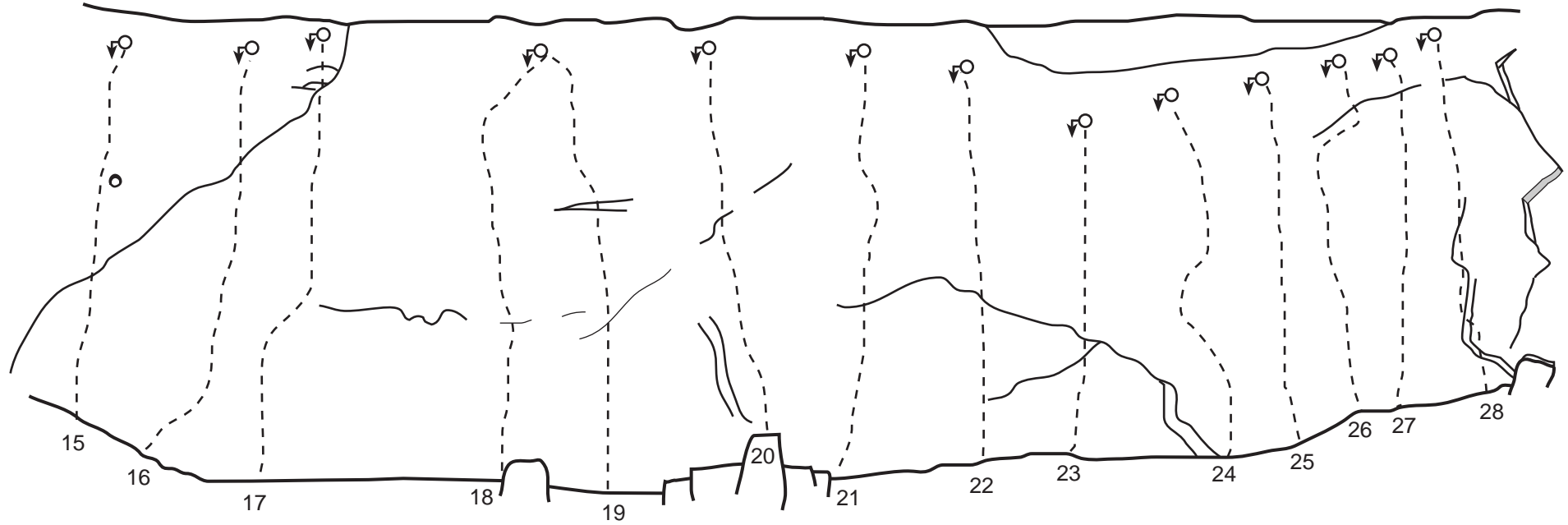


- | | | | |
|----------------------|-----|---------------------|-----|
| 1. Projekt | | 11. Hell Aldersheim | 6b+ |
| 2. Helleristning | 6a+ | 12. Gammel-Erik | 6b+ |
| 3. Nato plank | 5 | 13. Karius | 6c |
| 4. Peklo | 5- | 14. Baktus | 6c |
| 5. Nivlheim | 6a | | |
| 6. Mose dotten | 5+ | | |
| 7. På rygg | 6 | | |
| 8. Glassy junction | 6c | | |
| 9. Hoyem&Aaldes drøm | 6c+ | | |
| 10. Din Jaevel | 6c+ | | |

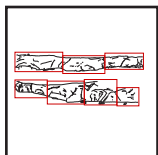


Approach

Hell, 2

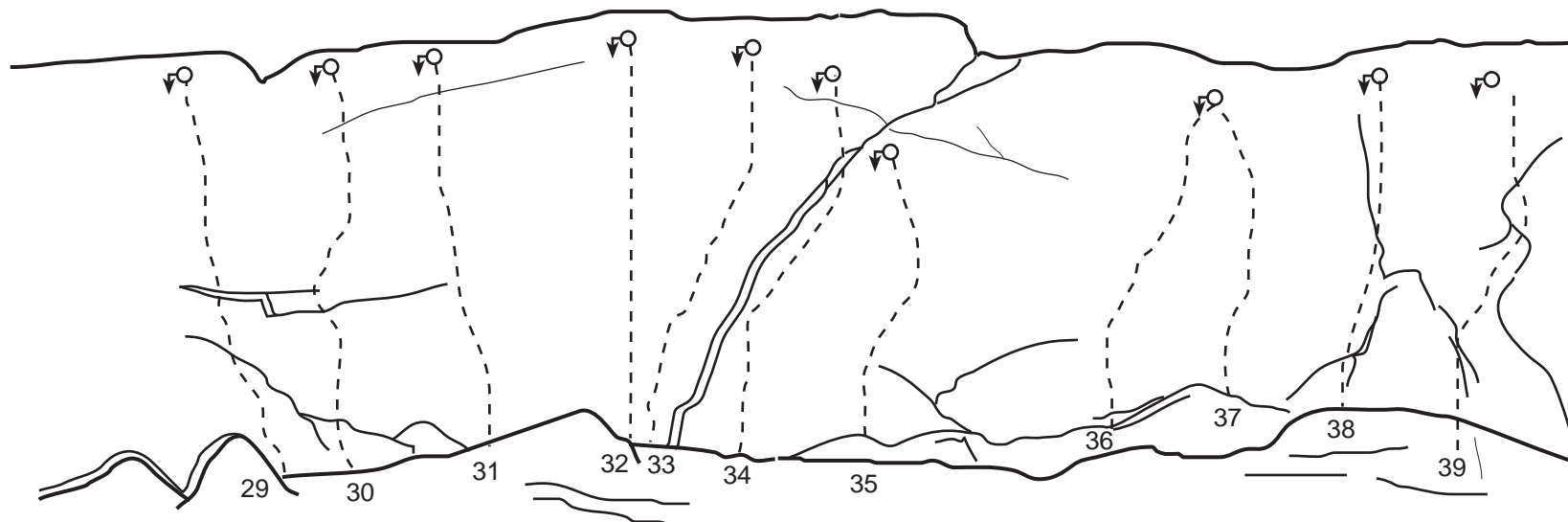


- | | | | |
|---------------------------|-----|------------------|-----|
| 15. Kaninartikler | 6C | 25. Rå nytelse | 7c |
| 16. Butthole surfer | 6b+ | 26. Råken Roll | 7b |
| 17. Lysere tider | 6b | 27. Rå skuffelse | 7b+ |
| 18. Drømme om Lajla | 6c | 28. Telehiv | 7b |
| 19. The Undertaker | 6c | | |
| 20. I negerens vold | 6b+ | | |
| 21. Studie i grønt | 6c | | |
| 22. Sort messe | 7b | | |
| 23. Sokkerus | 7a+ | | |
| 24. Bavarian meets Norway | 7b | | |

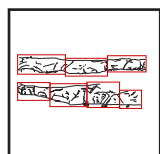


Approach

Hell, 3

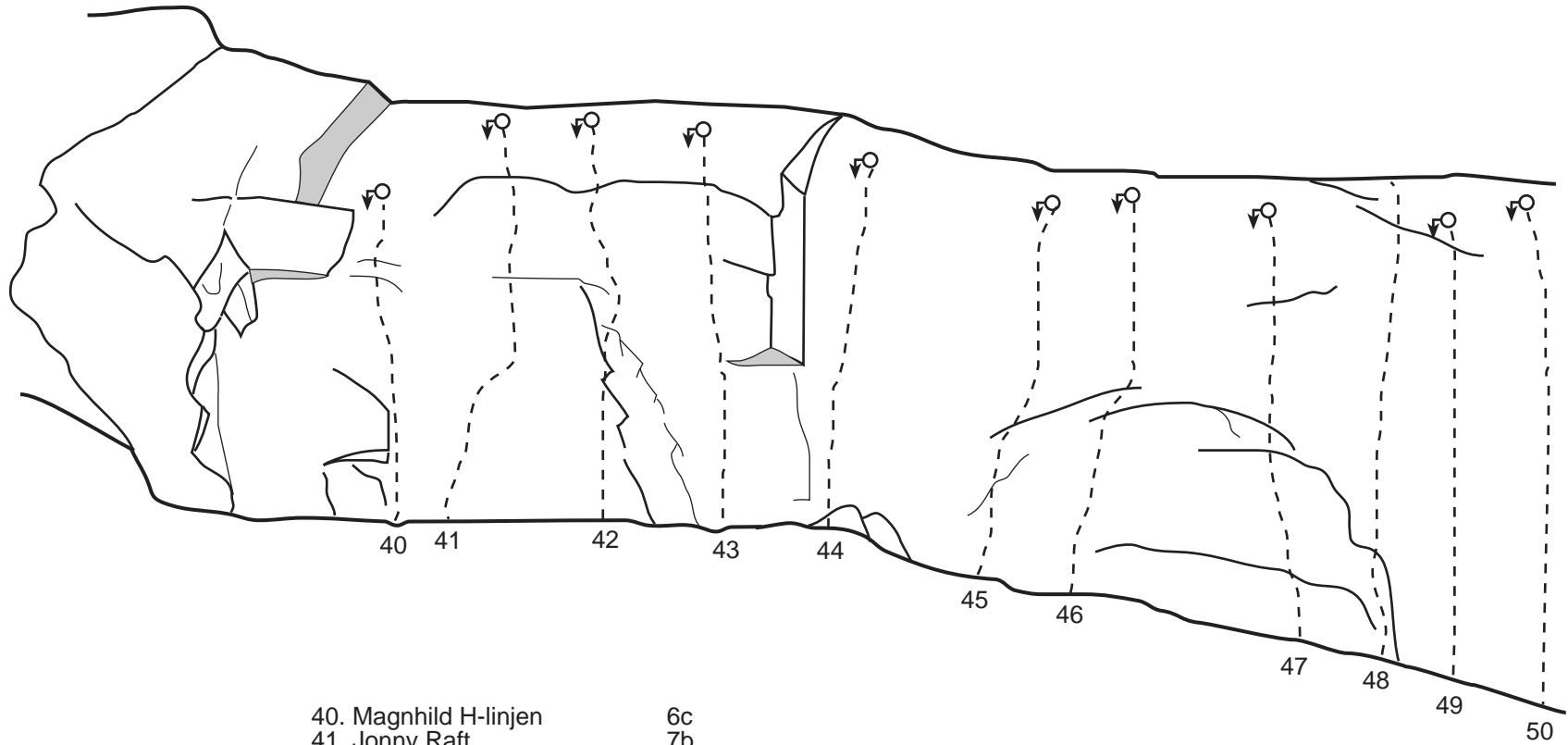


- | | |
|------------------------|-----|
| 29. Soft parade | 7a |
| 30. Lady die | 7b |
| 31. Burzum | 7b+ |
| 32. La oss skyte 5 bjø | 7b+ |
| 33. Tabulator | 7c+ |
| 34. Soma | 7a+ |
| 35. Dantes Inferno | 6c+ |
| 36. Harrytasser | 6c |
| 37. Hotter than Hell | 7a+ |
| 38. Fossilen | 7a |
| 39. Kvisvik Blondino | 7b |

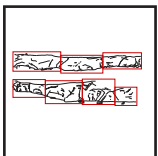


Approach

Hell, 4



- | | |
|-------------------------|-----|
| 40. Magnhild H-linjen | 6c |
| 41. Jonny Raft | 7b |
| 42. Go to Hell | 7a |
| 43. Forsynin | 7b |
| 44. Eksorsisten | 7b |
| 45. Pornodiederet | 6c+ |
| 46. Hellsing frå ho Mor | 7c |
| 47. Bjørnemøte | 7b |
| 48. Klassikeren | 7b+ |
| 49. Hells hematt | 7c+ |
| 50. Friidrettsdama | 8a |

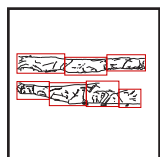


Approach

Hell, 5



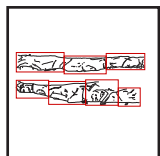
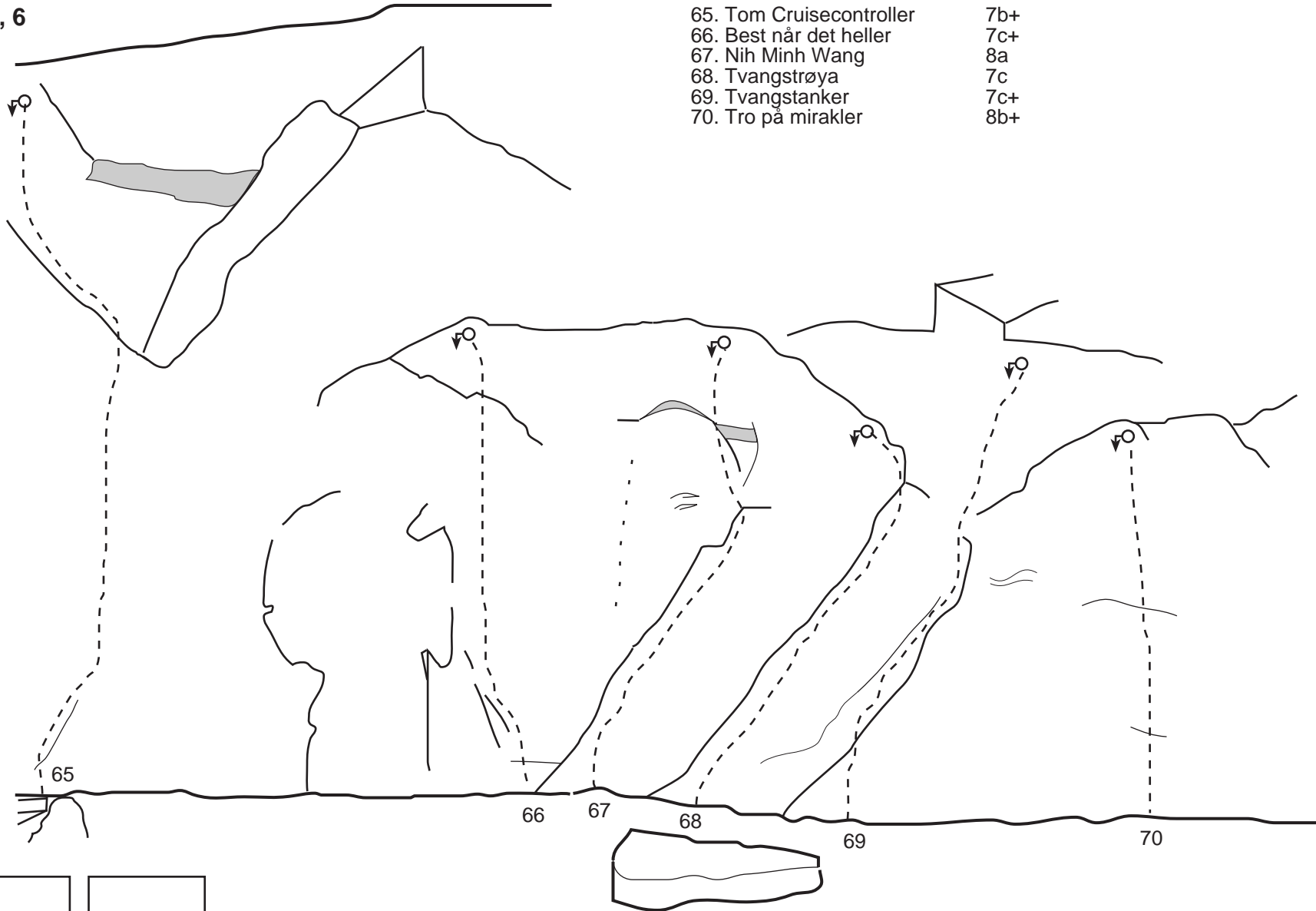
- | | |
|-----------------------|-----|
| 51. Buldredyret | 8a+ |
| 52. Selbuvuddu | 8b |
| 53. Satan Export | 8b |
| 54. Par Toutatis | 8a+ |
| 55. Hells Angel | 8a+ |
| 56. Himmel | 7b |
| 57. Nagells metode | 8a |
| 58. Klassisk mekanikk | 8a+ |
| 59. Link up'en | 7c+ |
| 60. Pulp Friction | 7c |
| 61. Hodet over vannet | 8b |
| 62. Lykkepillen | 8a+ |
| 63. Viagra | 8a |
| 64. Blå Strek | 7c+ |



Approach

Hell, 6

- | | |
|--------------------------|-----|
| 65. Tom Cruisecontroller | 7b+ |
| 66. Best når det heller | 7c+ |
| 67. Nih Minh Wang | 8a |
| 68. Tvangstrøya | 7c |
| 69. Tvangstanker | 7c+ |
| 70. Tro på mirakler | 8b+ |

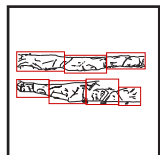
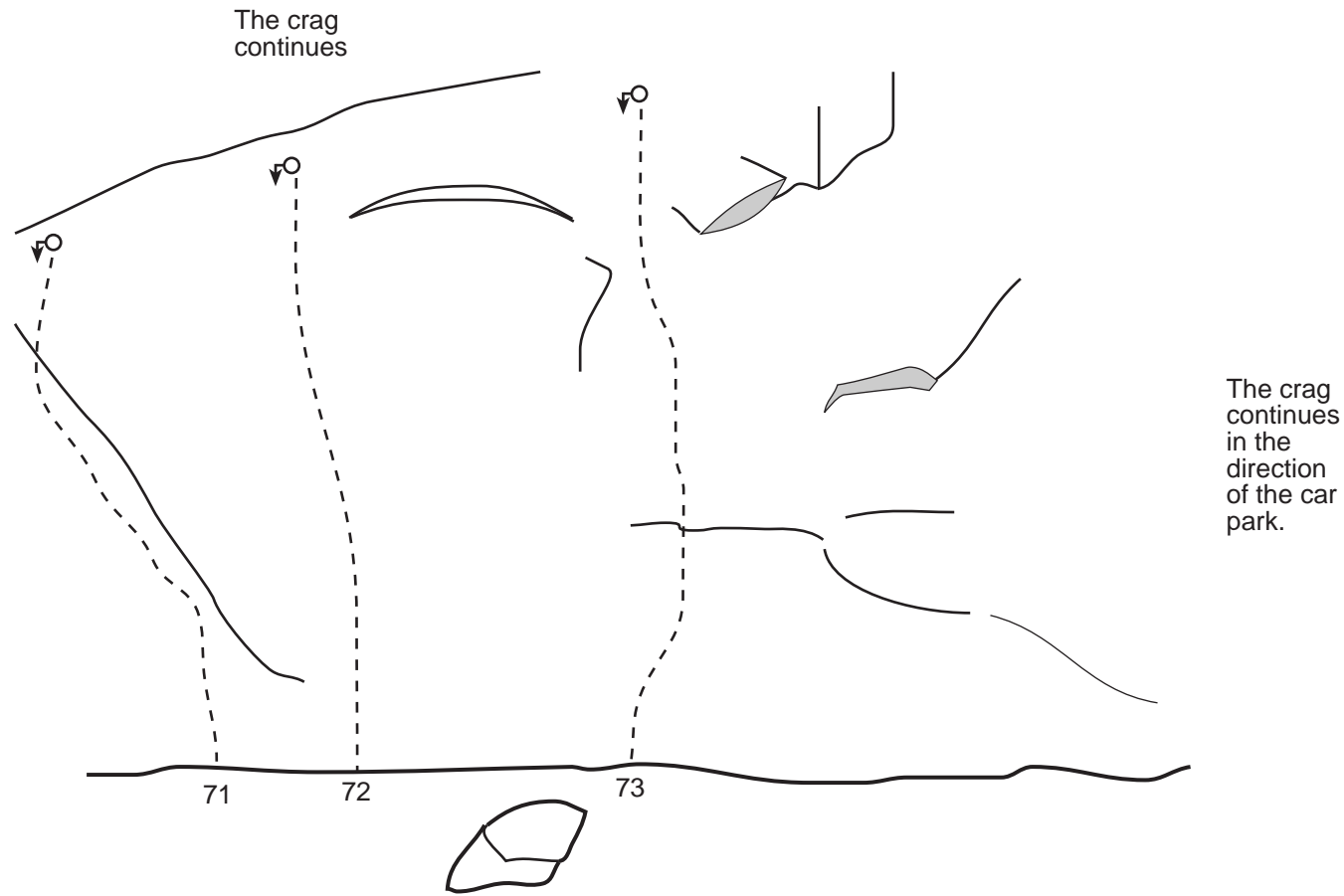


Approach

Hell, 7

- 71. I de godes selskap
- 72. Karelin
- 73. Orbit Hotel

- 7c+
- 8b+
- 6b



Approach